



Introduction

Current interest in Jewry Wall Museum and its future, arising from e.g.:

- Acquisition of Vaughan College from University of Leicester
- Connecting Leicester improvements - redevelopment of the Jubilee Square
- Redevelopment of Friars Mill and Waterside
- Jewry Wall Museum's 50th Anniversary
- Effect of discovery and reinterment of King Richard III
- New understanding of the value of Leicester's heritage



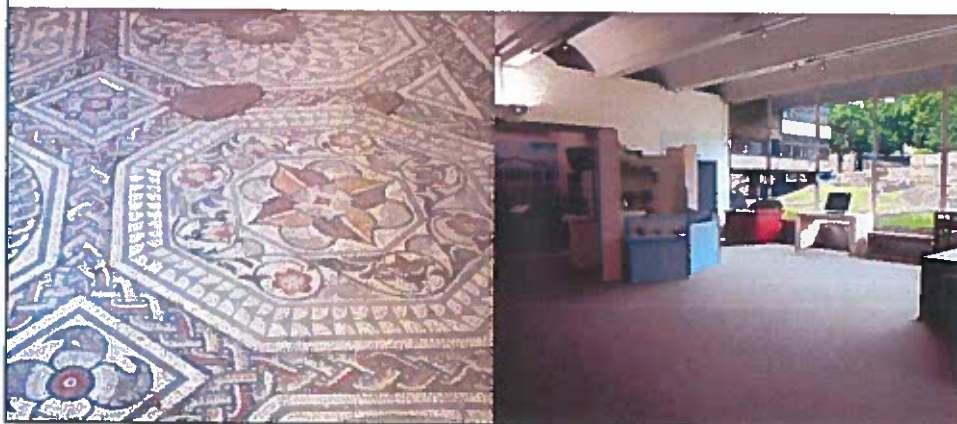
Background

- Acclaimed modernist building by Trevor Dannatt
- Vaughan College opened 1962, operated by the University of Leicester
- Jewry Wall Museum opened 1966, operated by Leicester City Council
- Unique bathhouse remains and wall
- Outstanding roman and early Leicester collections
- Finds from the major excavations e.g. High Cross excavation
- Thriving archaeological community in Leicester and Leicestershire
- Active friends group- Friends of Jewry Wall Museum



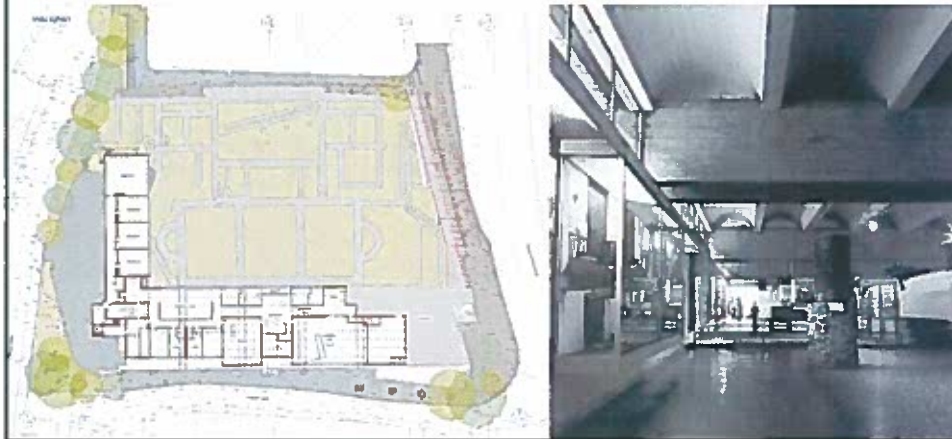
Issues

- Range of options for using whole building
- Museum and surroundings now "tired" and dated
- Scope to increase visitor numbers from 20-25,000 pa to c 75,000 pa
- Create visitor attraction with regional and national appeal



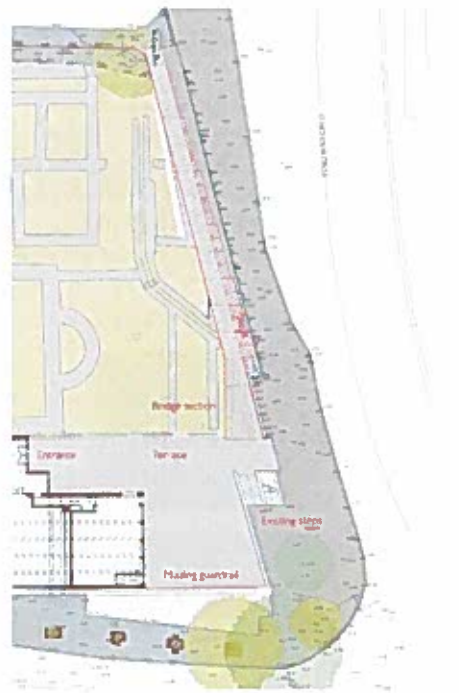
Work done so far

- September 2015 acquisition of Vaughan College completed
- Condition surveys carried out
- July 2015 – January 2016 review of best use of whole building and site
- Consideration of access, presentation, visitor experience, operations, and sustainability of museum.

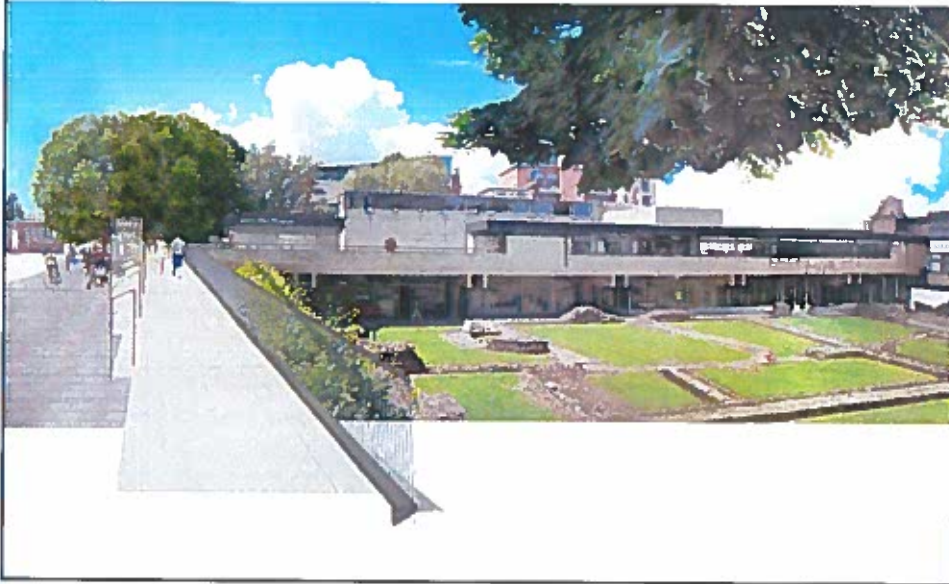


New walkway from St Nicholas Circle to Vaughan College podium

- Archaeological investigations carried out before work can start
- Scheduled Monument Consent applied for



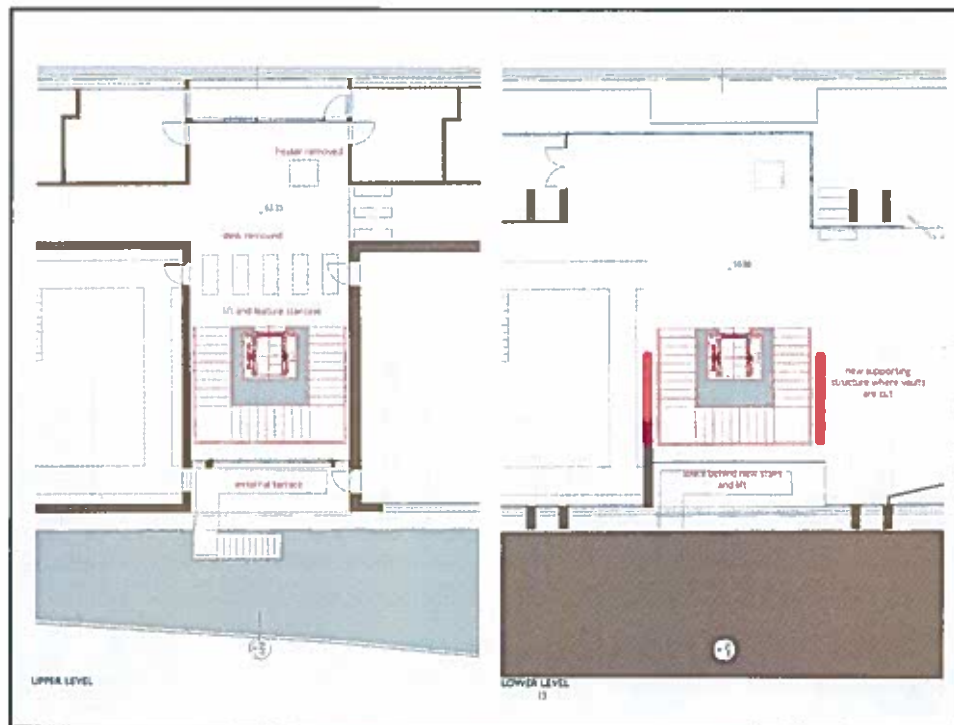
New walkway



New museum access

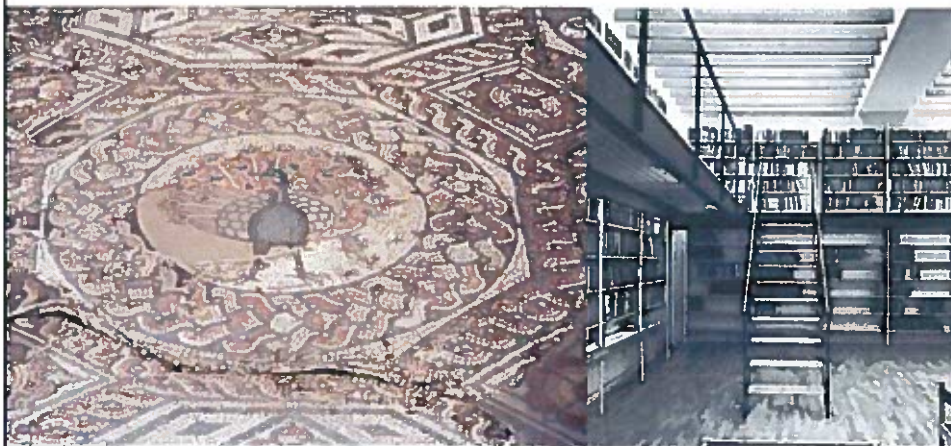
- From Vaughan College entrance
- Lift and staircase to display areas
- Lift and staircase being designed now
- Design for first floor to be finalised as part of overall museum design
- Restore integrity of 1960s interior
- Retain room configuration as far as possible





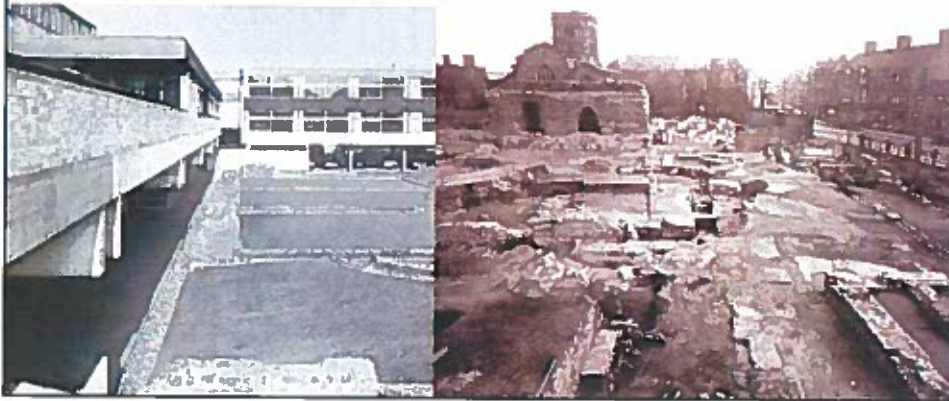
Redisplay and re-configure museum

- Design scheme to be commissioned
- Costed options will enable plans to be finalised for both floors
- Conservation work to start on major items e.g. peacock pavement



Improve external site

- Restore archaeological layout
- Improve signage
- Improve interpretation
- Clean concrete
- Repaint fascias and windows
- Restore cobbled path between Jewry Wall and St Nicholas Church



Timescales

- Walkway will be complete in 2017
- Other site improvements complete during 2016
- Museum plans finalised by December 2016



Potential budget

- First phase expected to cost c. £1.5 million (subject to formal decision)
- Costings for the next phase by December 2016
- Total budget could be over £5 million – but costs not yet established
- External funding bid will be considered



